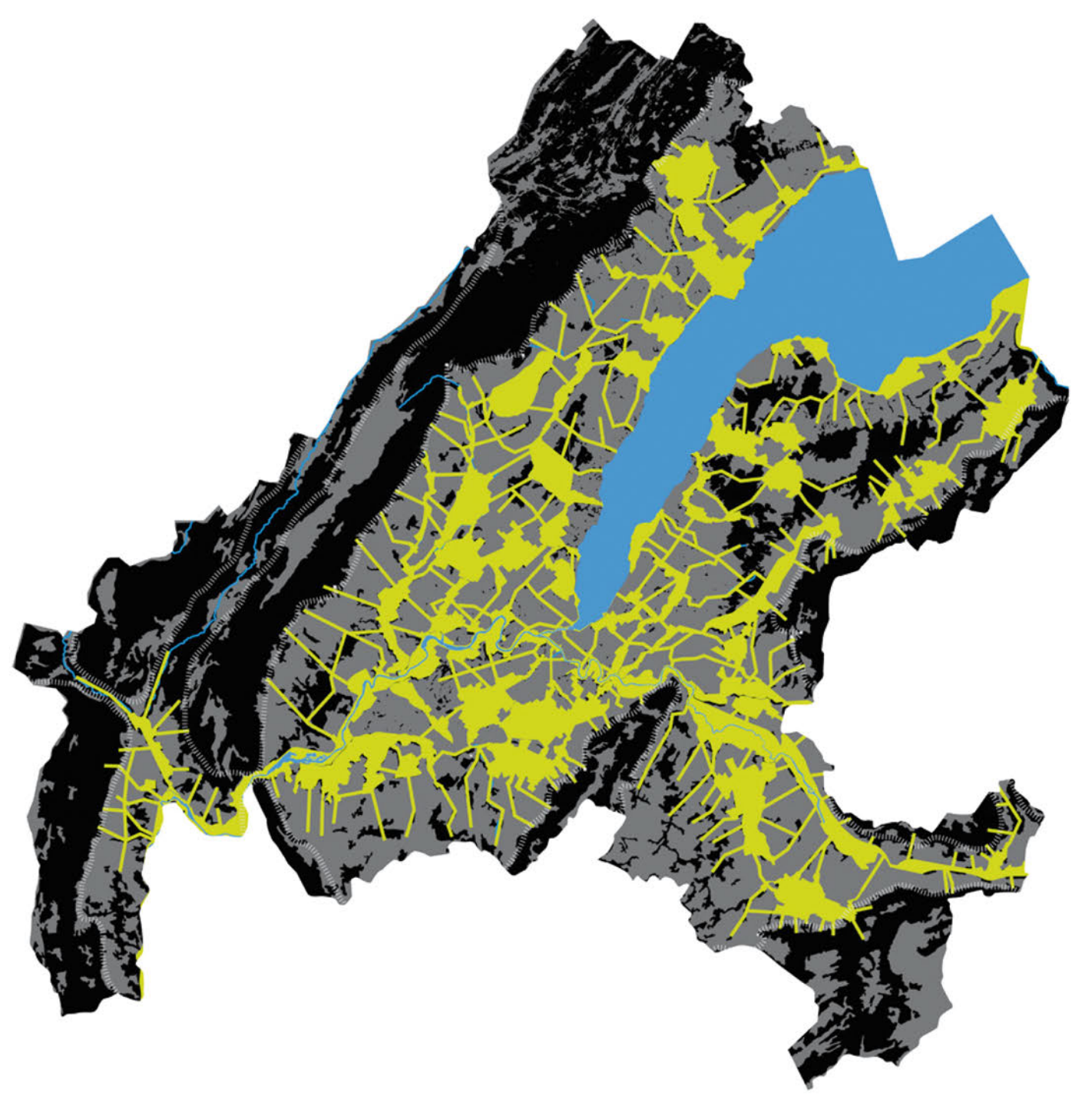









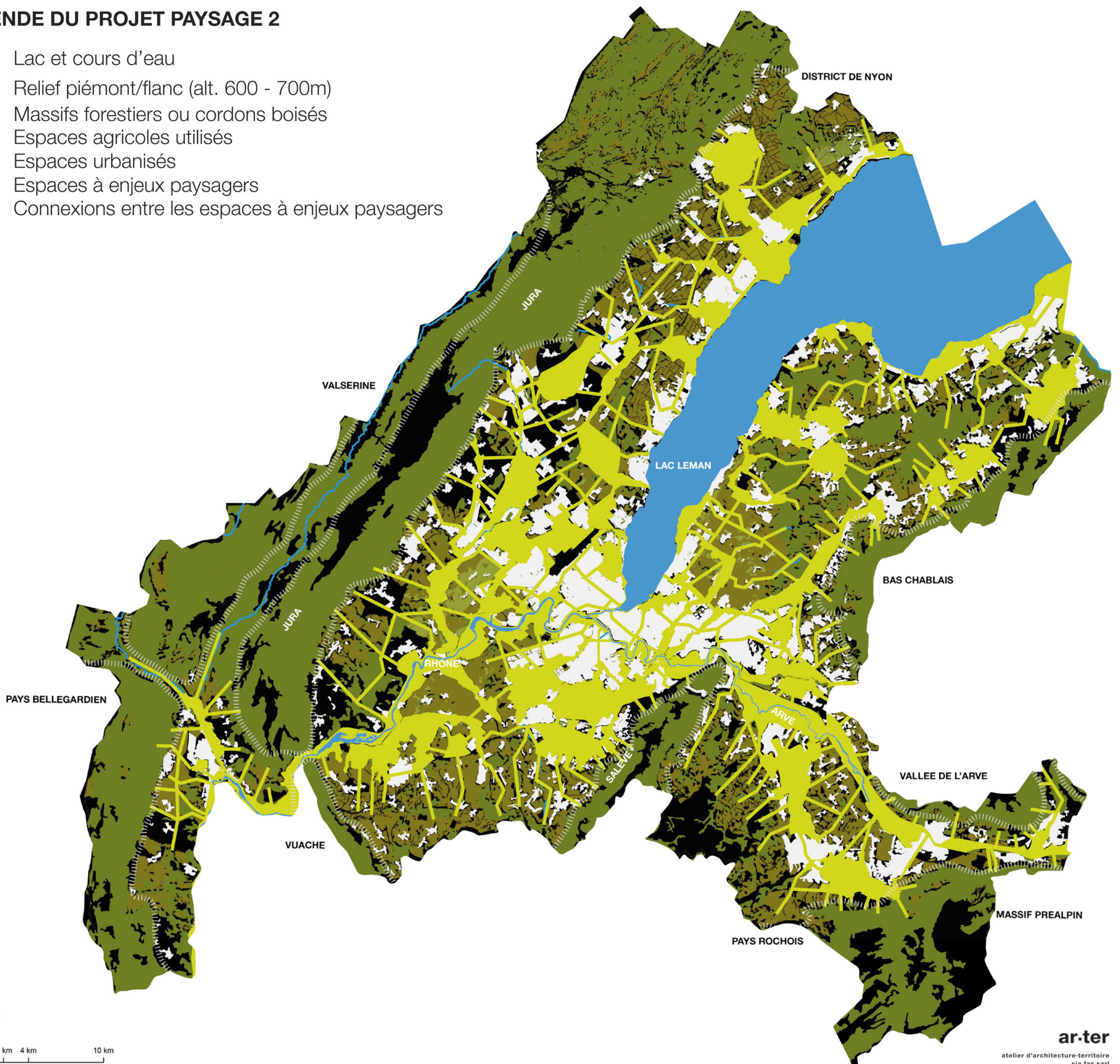
charpente paysagère



maillage

LEGENDE DU PROJET PAYSAGE 2

-  Lac et cours d'eau
-  Relief piémont/flanc (alt. 600 - 700m)
-  Massifs forestiers ou cordons boisés
-  Espaces agricoles utilisés
-  Espaces urbanisés
-  Espaces à enjeux paysagers
-  Connexions entre les espaces à enjeux paysagers



0 m 2 km 4 km 10 km